

" A PLANNED UNIT DEVELOPMENT "

# GOLDEN LAKES VILLAGE SECTION SIX

IN SECTION 28, TOWNSHIP 43 SOUTH,  
RANGE 42 EAST.

SHEET 2 OF 2

1977

GOLDEN LAKES VILLAGE SECTION ONE P.B. 30 PP 18 & 19

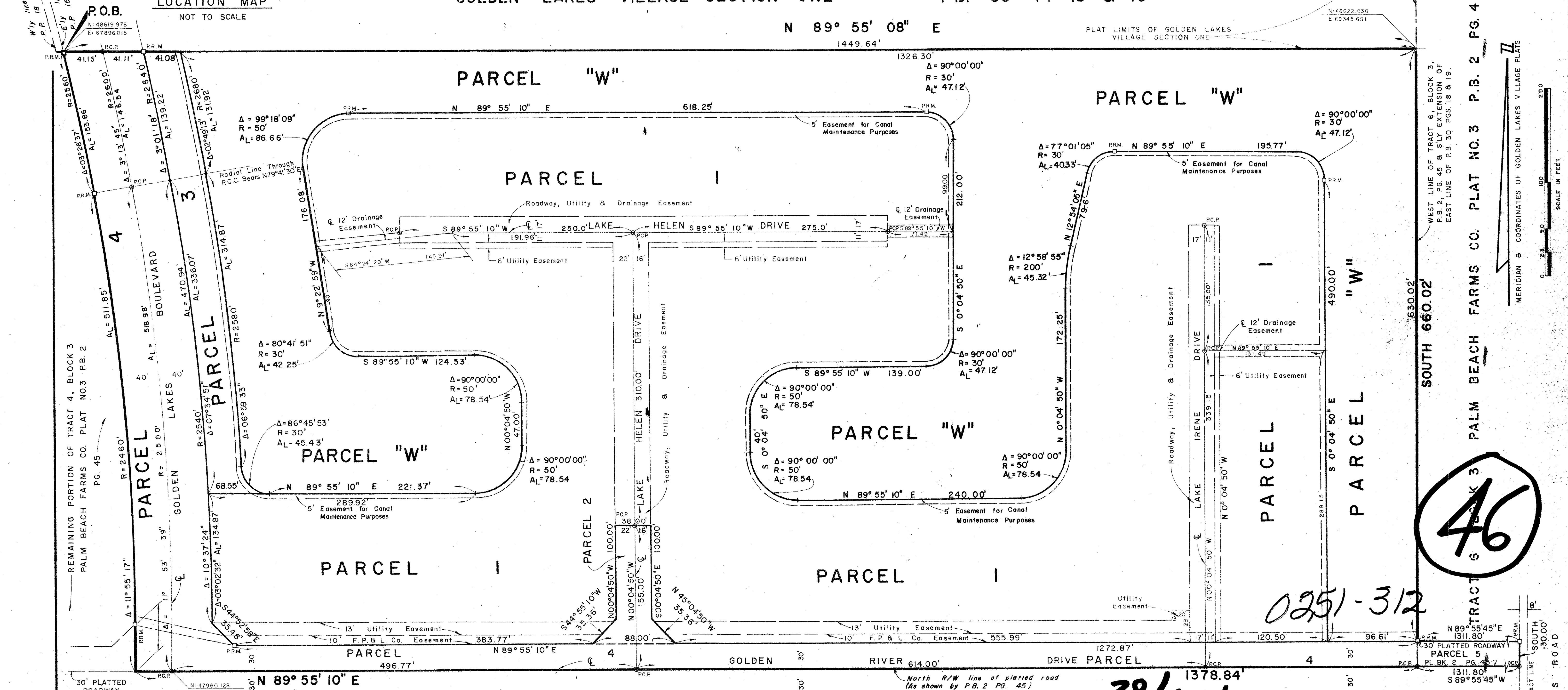
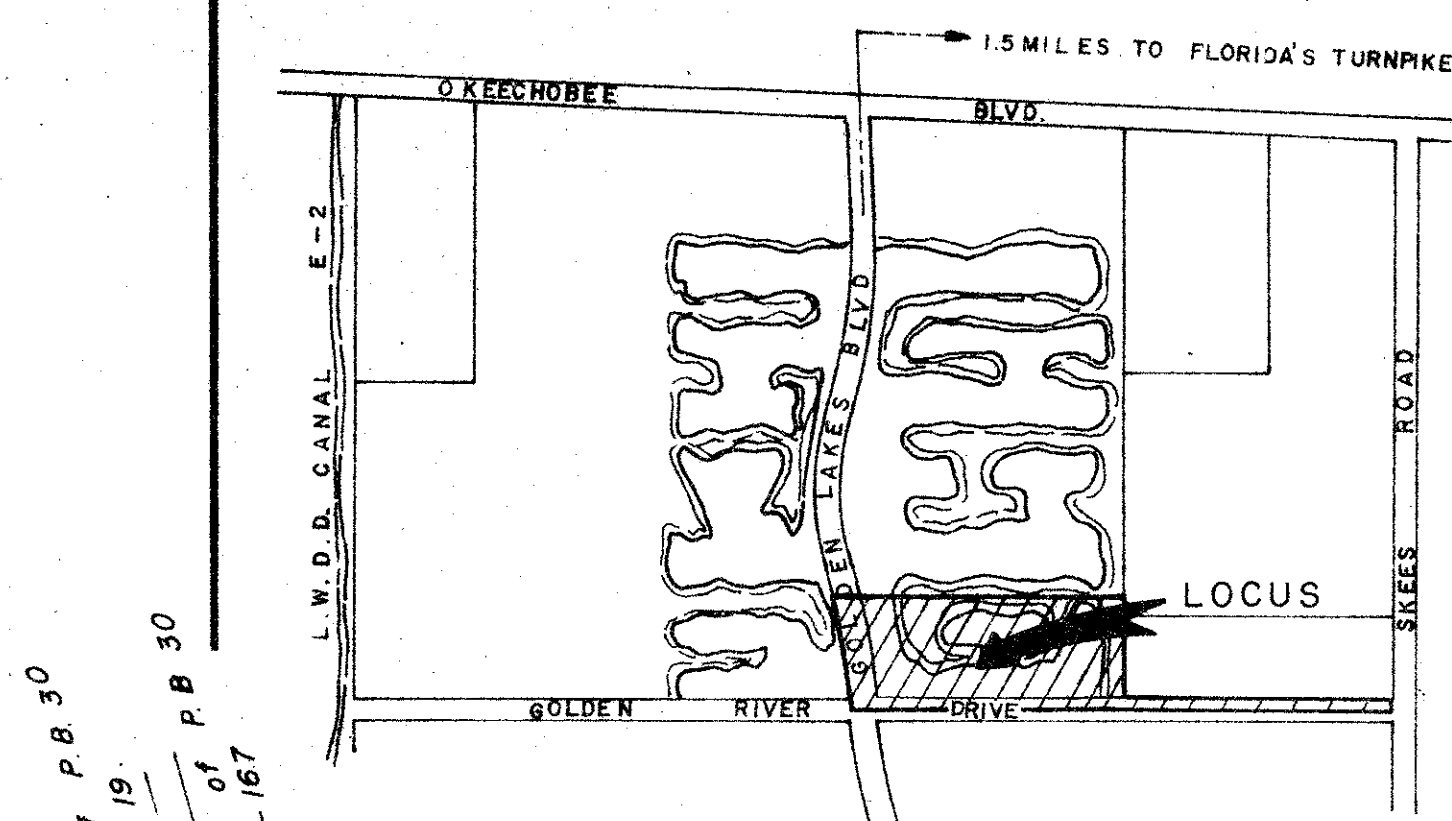
N 89° 55' 08" E  
1449.64'

PLAT LIMITS OF GOLDEN LAKES  
VILLAGE SECTION ONE

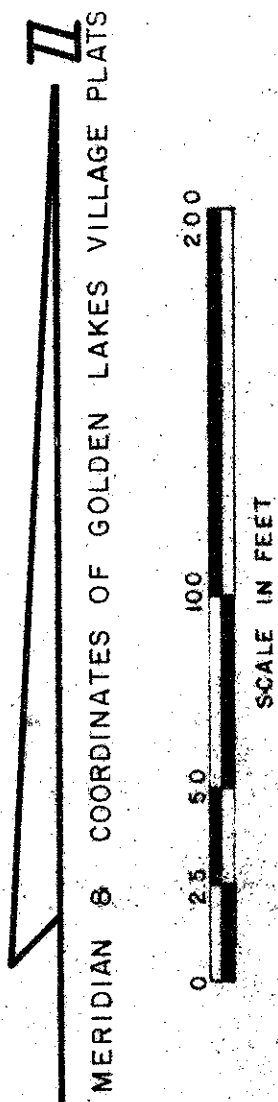
72

STATE OF FLORIDA  
COUNTY OF PALM BEACH  
This Plat was filed for record at \_\_\_\_\_ M.  
this \_\_\_\_\_ day of \_\_\_\_\_  
19\_\_\_\_ and duly recorded in Plat Book No. \_\_\_\_\_  
on page \_\_\_\_\_  
JOHN B. DUNKLE, Clerk Circuit Court  
B. \_\_\_\_\_ D. \_\_\_\_\_

LOCATION MAP  
NOT TO SCALE



WEST LINE OF TRACT 6, BLOCK 3,  
P.B. 2, PG. 45 & SLY EXTENSION OF  
EAST LINE OF P.B. 30 PGS. 18 & 19.



SOUTH 660.02'

PALM BEACH FARMS CO. PLAT NO. 3 P.B. 2 PG. 45

TRACT 3  
BLOCK 3  
46

28/43/42

TRACT 9 BLOCK 3  
PALM BEACH FARMS CO.  
PLAT NO. 3  
P.B. 2 PG. 45

L.W.D.D. LATERAL L-2 ORB 2336 PG. 940  
ORB 2353 PG. 1381-1382

TRACT 8 BLOCK 3 PALM BEACH FARMS CO. PLAT NO. 3 P.B. 2 PG. 45

GOLDEN LAKES VIL. #6

Field Book  
No. Pg.  
Office  
D.M. White  
Drawn  
C. Goss  
Checked  
D.M. White  
FIELD

ROBERT E. OWEN & ASSOCIATES, INC.  
ENGINEERS - PLANNERS - SURVEYORS  
WEST PALM BEACH  
FLORIDA

GOLDEN LAKES VILLAGE  
SECTION SIX  
SHEET 2 OF 2 SHEETS

Job No. 77-203  
Scale 1" = 50'  
Sheet 72  
of 2  
File No. BF-2208 F

34